

Parts Manual

200 Series



AHE-250-D01



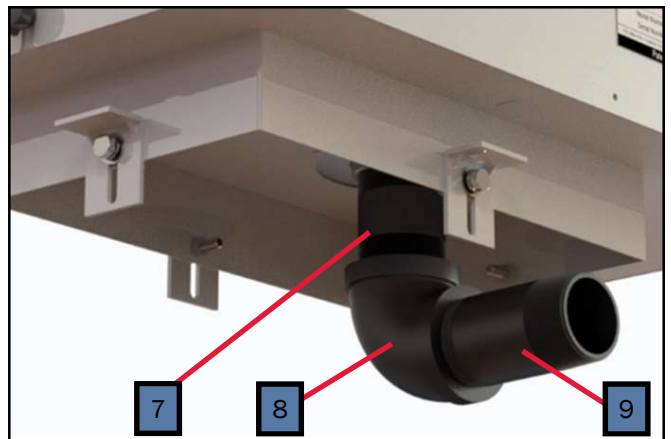
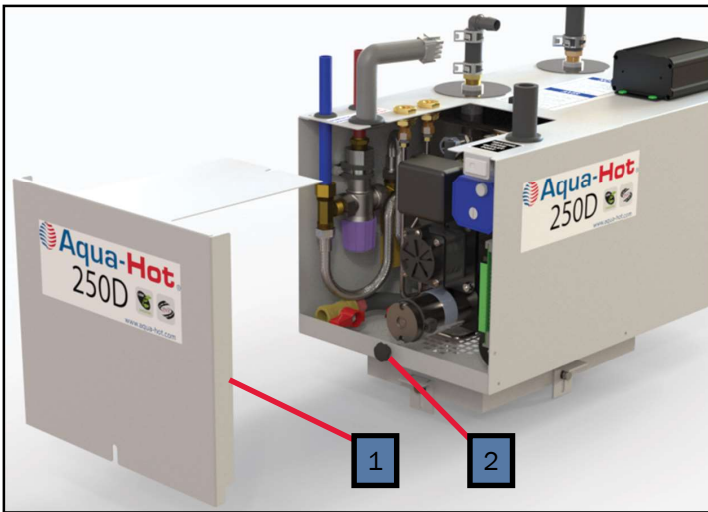
Introduction

The purpose of this manual and the information contained herein, is to assist with the identification of components included with the Aqua-Hot 250D unit which may need to be in need to replacement.

You will notice that some components have been stated multiple times, this is done so as to assist the technician or end-user in correctly identifying components within the Aqua-Hot.

Contents

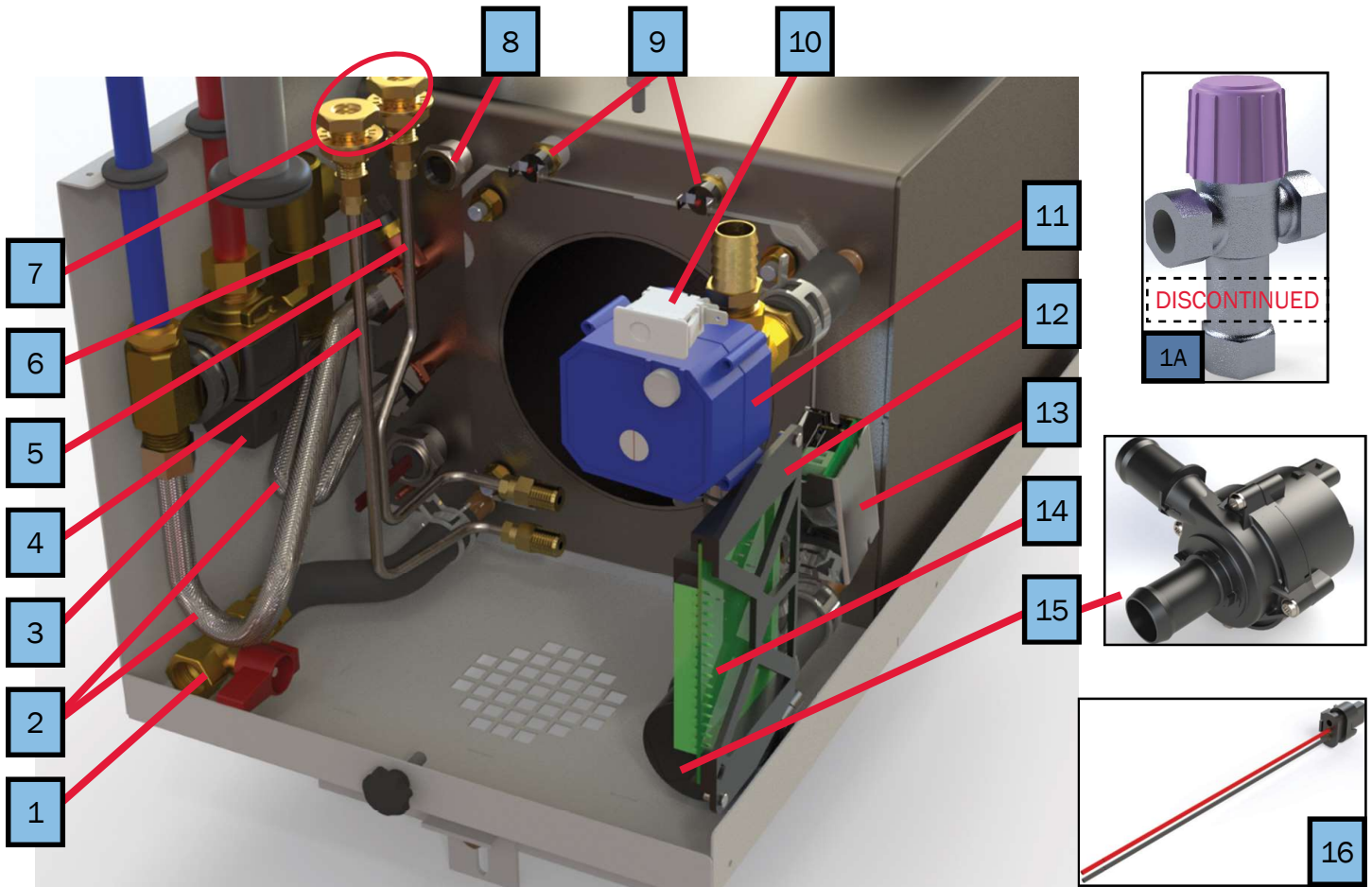
| | |
|--|---|
| General Components | 3 |
| Access Cover | |
| Thumb Screw | |
| Expansion Bottle Kit | |
| ¾" Constant Tension Hose Clamp | |
| Switch Panel Assembly | |
| Rocker Switch | |
| Exhaust System Components | |
| Diesel Fuel Fitting Connections | |
| 90° Hose Elbow w/ 5/8" Barb | |
| 250 Series AC Electric Relay Box | |
| 250D Components | 5 |
| Brass Ball Valve (Drain) | |
| Lead-Free Braided Stainless Steel Faucet Connector | |
| Danfoss 120° F Tempering Valve | |
| Honeywell 140° F Tempering Valve | |
| Fuel Supply Line | |
| Fuel Return Line | |
| Low-Temperature Cutoff Thermostat | |
| Brass Bulkhead Fitting Diesel Fuel Connection | |
| Control Thermostat/Thermistor | |
| High-Limit Thermostat | |
| Interlock Switch | |
| Three-Way Motorized Valve | |
| Relay Control Board Cradle | |
| Buck Boost Module | |
| 200 Series Relay Control Board | |
| Buehler C21 Fluid Pump | |
| Pressure Relief Valve | |
| AC Electric Element | |
| Diesel Burner Components | 7 |
| Aqua-Hot Diesel Burner | |
| Diesel Air Shutter | |
| Diesel Igniter Coil | |
| Fuel Pump Motor | |
| Set Screw Coupler | |
| Danfoss Diesel Fuel Pump w/ Solenoid | |
| Burner Fuel Supply Line | |
| Diesel Igniter Module | |
| Diesel Photo-Eye | |
| Fuel Tower Heat Shield | |
| Diesel Fuel Nozzle | |
| Antifreeze and Related Products | 8 |
| Pink & Green Propylene Glycol | |
| Antifreeze Refractory Tester | |



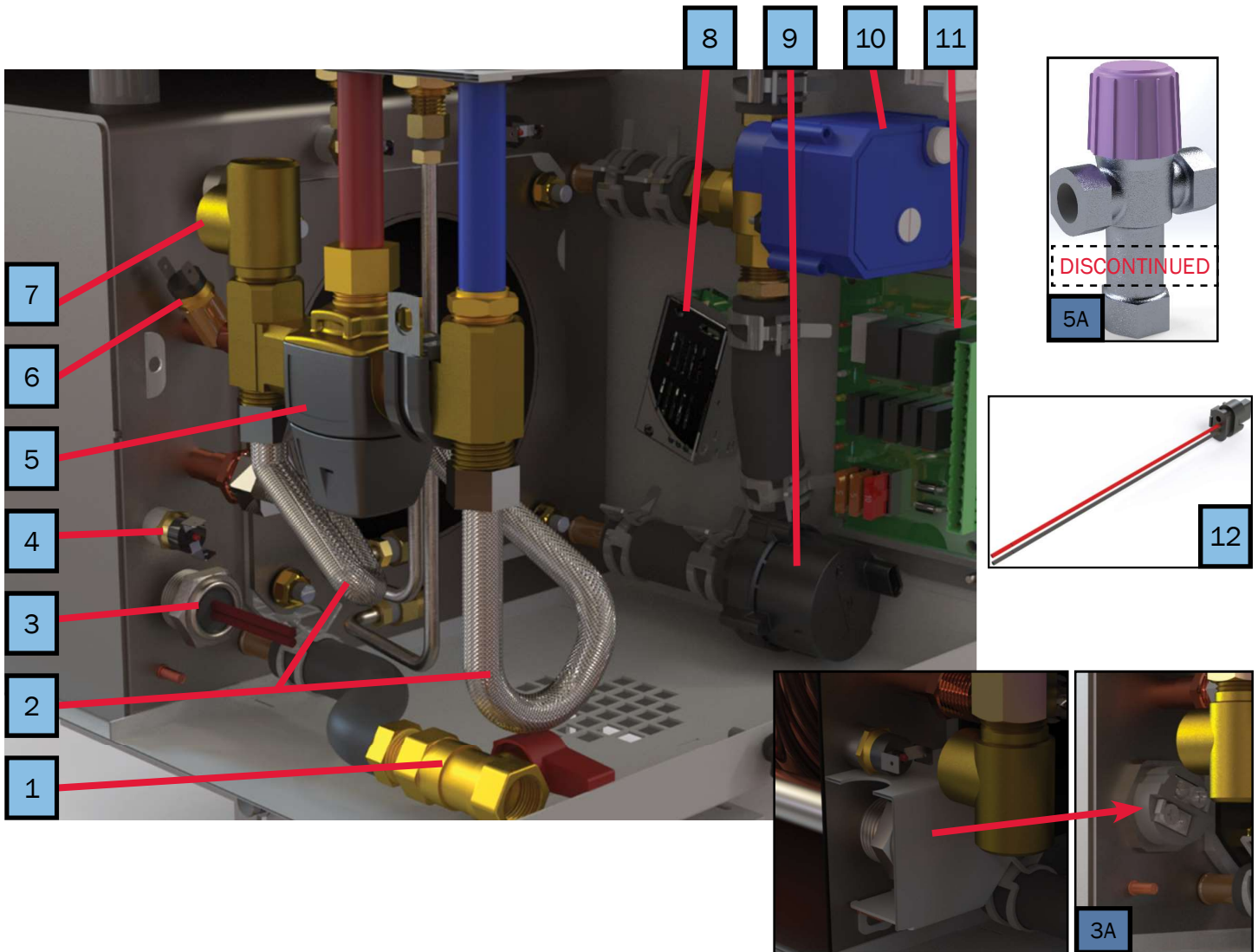
| Key | Part Number | Beginning of Use | Description |
|-----|-------------|------------------|---|
| 1 | SME-200-002 | Launch | Access Cover |
| 2 | HDX-010-400 | Launch | Star Grip Thumb Screw (x2) |
| 3 | MSE-200-0FB | Launch | Kit: Expansion Bottle, Fluid Sensor, Clamps, Hose |
| 4 | PLX-CTB-270 | Launch | ¾" Constant Tension Hose Clamp |
| 5 | ELE-000-508 | Launch | 12V DC Switch Panel Assembly |
| 6 | ELX-283-283 | Launch | Rocker Switch |
| 7 | PLX-664-750 | Launch | Pipe Nipple, 3" 1 ½" (M) NPT |
| 8 | PLX-11D-028 | Launch | 90° Exhaust Elbow, 1 ½" (M) NPT |
| 9 | PLX-664-730 | Launch | Pipe Nipple, 4" 1 ½" (M) NPT |



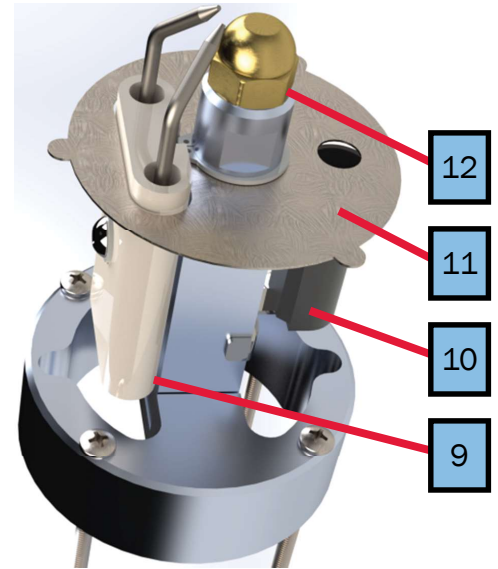
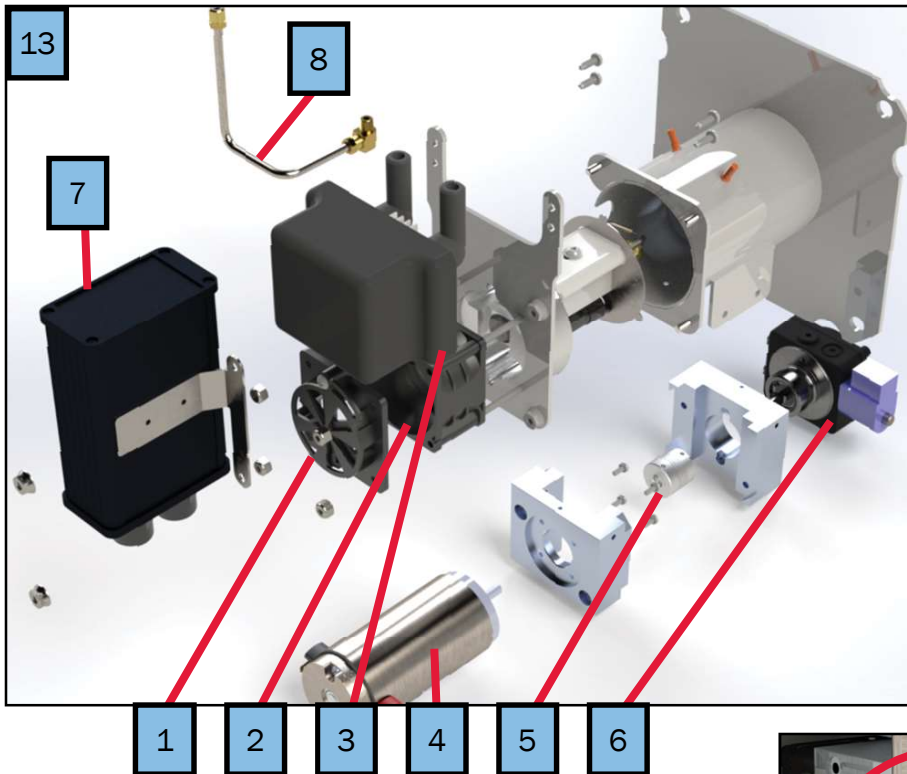
| Key | Part Number | Date of Use | Description |
|-----|-------------|-------------|--------------------------------|
| 1 | PLX-105-800 | Launch | Diesel Fuel Fitting Connection |
| 2 | PLX-200-345 | Launch | 90° Hose Elbow w/ 1/8" Barb |
| 3 | ELX-630-001 | Launch | AC Electric Relay |



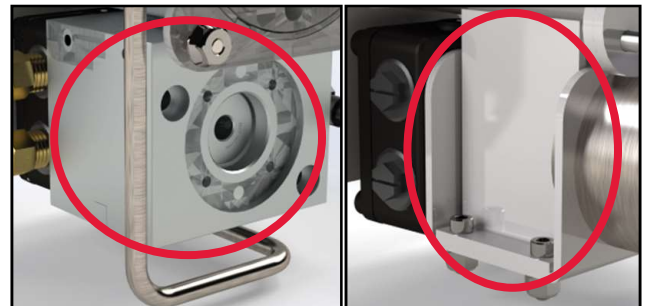
| Key | Part Number | Date of Use | Description |
|-----|-------------|-------------|---|
| 1 | PLX-BV1-200 | Launch | Brass Ball Valve ½" (F) NPT |
| 2 | PLX-110-050 | Launch | Lead-Free Braided Stainless Steel Faucet Connector (x2) |
| 3 | PLX-362-100 | 4/26/2019 | Danfoss 120 °F Tempering Valve |
| 3A | PLX-09P-100 | Launch | Honeywell 140 °F Tempering Valve |
| 4 | FLE-250-001 | Launch | Fuel Supply Line |
| 5 | FLE-250-002 | Launch | Fuel Return Line |
| 6 | ELE-LTC-200 | Launch | Low Temperature Cutoff Thermostat |
| 7 | PLX-105-800 | Launch | Brass Bulkhead Fitting, ¼" x ¼" (F) NPT |
| 8 | ELE-015-011 | Launch | Thermostat, Control ½" (M) NPT |
| 9 | ELE-HLT-425 | Launch | 215 °F High-Limit Thermostat |
| 10 | ELX-000-051 | Launch | 12V DC Interlock Switch |
| 11 | PLE-888-250 | Launch | Three-Way Motorized Valve Kit |
| 12 | EPE-800-100 | Launch | Relay Control Board Cradle |
| 13 | ELE-400-025 | Launch | Buck Boost Replacement Kit |
| 14 | ELE-RCB-200 | Launch | 200 Series Relay Control Board |
| 15 | PLX-100-900 | Launch | Buehler C21 Fluid Pump |
| 16 | ELE-400-900 | Launch | Buehler C21 Wire Harness |



| Key | Part Number | Date of Use | Description |
|-----|-------------|-------------|---|
| 1 | PLX-BV1-200 | Launch | Brass Ball Valve ½" (F) NPT |
| 2 | PLX-110-050 | Launch | Lead-Free Braided Stainless Steel Faucet Connector (x2) |
| 3 | TBD | Launch | 1000W AC Element ¾" (M) NPT |
| 3A | ELX-2E7-250 | TBD | 1kW 120V AC Electric Element, 1" NPSM |
| 4 | ELE-888-425 | Launch | 215 °F 120V AC High-Limit Thermostat |
| 5 | PLX-362-100 | TBD | Danfoss 120 °F ½" NPT (M) Tempering Valve |
| 5A | PLX-09P-100 | Launch | Honeywell 140 °F Tempering Valve |
| 6 | ELE-LTC-200 | Launch | Low-Temperature Cutoff Thermostat |
| 7 | PLX-111-125 | Launch | 125PSI Pressure Relief Valve |
| 8 | ELE-400-025 | Launch | Buck Boost Replacement Kit |
| 9 | PLX-100-900 | Launch | Buehler C21 Fluid Pump |
| 10 | PLE-251-D01 | Launch | Three-Way Motorized Valve Kit (250D) |
| 11 | ELE-RCB-200 | Launch | 200 Series Relay Control Board |
| 12 | ELE-400-900 | Launch | Buehler C21 Wire Harness |



NOTE: Some units may have differing fuel pump mounting hardware.



| Key | Part Number | Date of Use | Description |
|-----|-------------|-------------|--|
| 1 | DBE-888-100 | Launch | Diesel Air Shutter Kit |
| 2 | DBE-888-151 | Launch | Diesel Combustion Blower Fan Kit |
| 3 | DBE-888-110 | Launch | Diesel Igniter Coil Kit |
| 4 | DBE-800-008 | Launch | Fuel Pump Motor |
| 5 | DBE-800-088 | Launch | 8mm x 8mm Set Screw Coupler |
| 6 | DBE-800-056 | Launch | Danfoss Diesel Fuel Pump with Solenoid |
| 7 | ELE-888-888 | Launch | Aqua-Hot 250D Burner Controller Kit |
| 8 | FLE-800-007 | Launch | Burner Fuel Supply Line |
| 9 | ELX-800-020 | Launch | Diesel Igniter Module |
| 10 | ELE-888-130 | Launch | Diesel Photo-Eye Kit |
| 11 | SME-800-053 | Launch | Fuel Tower Heat Shield |
| 12 | WPX-886-41A | Launch | Diesel Fuel Nozzle 60° |
| 13 | DBE-000-000 | Launch | Aqua-Hot Diesel Burner Assembly |
| 14 | ELE-888-121 | Launch | Replacement Electrode Wires Kit (not pictured) |



1



2



3



4



5

| Key | Part Number | Date of Use | Description |
|-----|-------------|-------------|------------------------------------|
| 1 | MSX-300-275 | Launch | Pink Propylene Glycol Concentrate |
| 2 | MSX-300-GRN | Launch | Green Propylene Glycol Concentrate |
| 3 | MSX-300-270 | Launch | 1 Gallon Pink Boiler Antifreeze |
| 4 | MSX-300-300 | Launch | 1 Gallon Green Boiler Antifreeze |
| 5 | MSX-907-162 | Launch | Coolant Tester Refractometer |

Parts Manual

200

SERIES



AHE-250-D01



Aqua-Hot Heating Systems, LLC
7501 Miller Drive, Frederick, CO 80504

Visit us online at www.aquahot.com
Call us at 574-AIR-XCEL (574-247-9235)

©2021 Aqua-Hot Heating Systems, LLC. Printed in the USA