



7501 Miller Dr., Frederick, CO 80504
Ph: 800 685-4298 or (303) 651-5500
www.aquahot.com



A Rich History

Aqua-Hot knows a thing or two about keeping vehicles warm so people are comfortable and productive in bone-chilling weather; we're now the leading designer and manufacturer of direct-fired hydronic heating systems for recreational vehicle motorcoaches and commercial trucks and vans.

In 1984, Aqua-Hot introduced the first direct-fired hydronic system for vehicles into the recreational vehicle market in 1984. This system pre-heated diesel engines and heated the interior air as well as the domestic hot water for long showers. Today, over 16 major RV Class A motorhome manufacturers deliver residential type luxury to their diesel and propane-fueled coach customers with Aqua-Hot® Comfort Zones On Board™ — Even Heat, Constant Hot Water, Quiet Heating and Low Emissions. And, if these customers need system maintenance, there're over 160 Aqua-Hot factory-trained and certified centers located across North America.

To address commercial truck fleet operator's need to eliminate idling, reduce vehicle emissions and minimize maintenance, Aqua-Hot introduced nine direct-fired hydronic systems for any medium and heavy-duty fleet fuel source — natural gas, propane or diesel — in 2012. In 2013, C.A.R.B. approved the Aqua-Hot natural gas direct-fired heating system; this was the first and, to date, the only NG system approved.

Aqua-Hot direct-fired systems are capable of heating air, engines and fluids, such as hydraulic systems, with minimal consumption from the onboard fuel system. Engine on. Or engine off. Aqua-Hot Auxiliary Heaters are used in conjunction with an Aqua-Hot direct-fired system or tapped directly into the vehicle's cooling system.

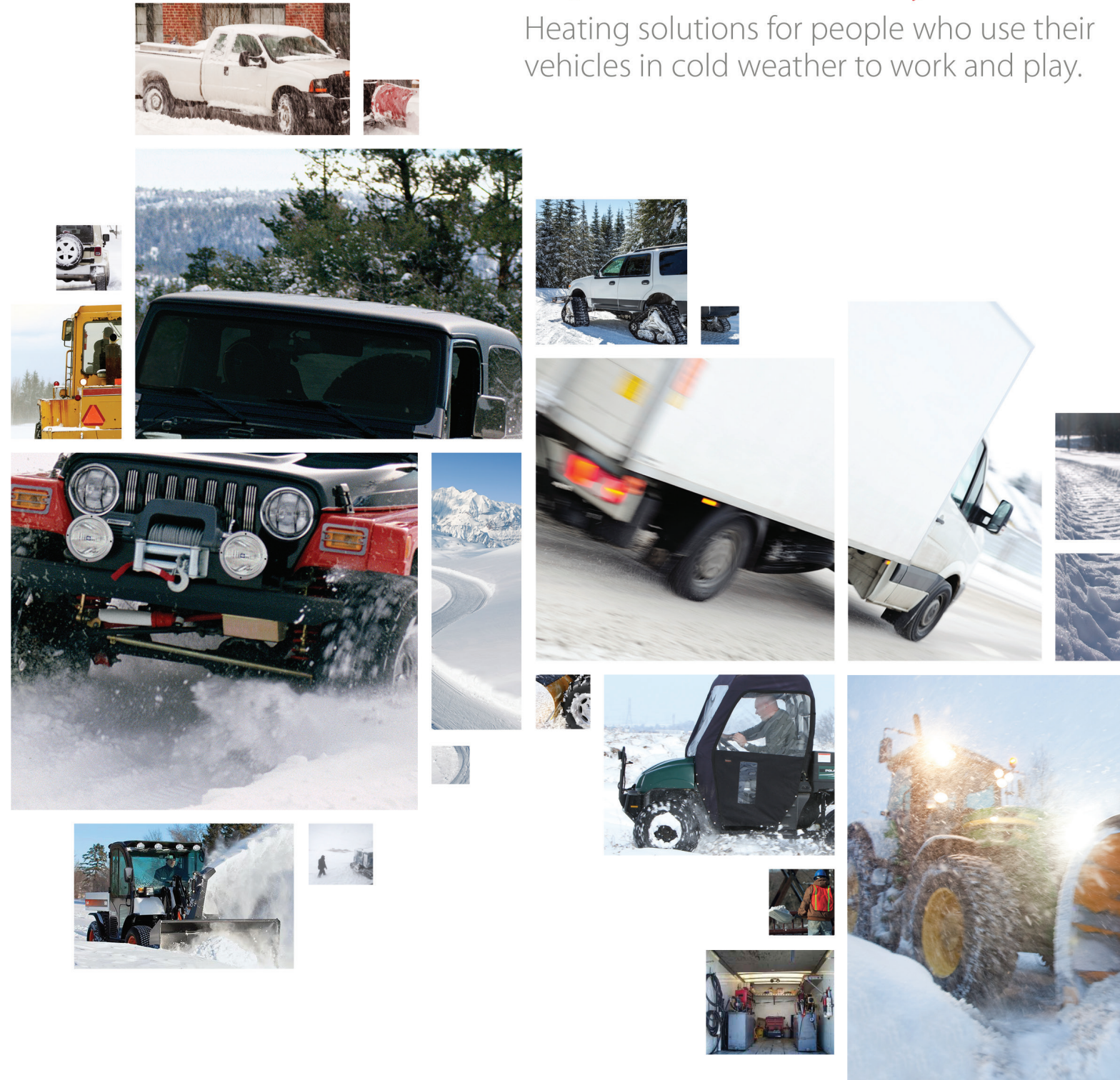
Don't Sit In The Cold. Warm Up And Get Going.



It's a matter of comfort

Aqua-Hot® Auxiliary Heaters

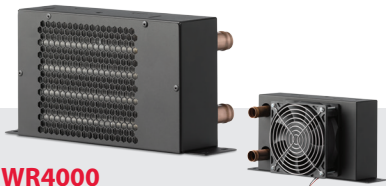
Heating solutions for people who use their vehicles in cold weather to work and play.



Heat Exchangers For Work And Play Vehicles

High Performance. Low Amp Draw.

CABIN HEATERS

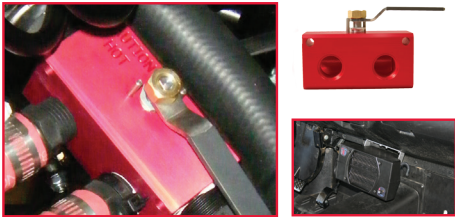


Model:	AH-100	AH-200	WR4000	WR13000	WR20000	WR30000
Part Number:	EXE-200-100	EXE-200-200	EXE-100-001	EXE-100-002	EXE-100-003	EXE-100-004
Btu Max:	4,000/hr	6,000/hr	4,000/hr	13,000/hr	20,000/hr	30,000/hr
Fan	Single Axial	Single Axial	Single Axial, Single Speed	Dual Axial, Three-Speed	Dual Axial, Three-Speed	Dual Axial, Three-Speed
Output (cfm):	0 - 100	0 - 200	97	Low – 111 Medium – 132 High – 155	Low - 264 Medium – 296 High – 373	Low - 212 Medium - 260 High - 435
Switch:	Integrated Variable Speed	Integrated Variable Speed		Sold Separately*	Sold Separately*	Sold Separately*
Electrical:	12 V dc	12 V dc	13.5 V dc	13.5 V dc	13.5 V dc	13.5 V dc
Amp Draw:	0.1 To 0.5 A	0.5 To 2.0 A	1.1 A	Low – 1.58 A Medium – 1.89 A High – 2.34 A	Low – 1.85 A Medium – 2.32 A High – 2.89 A	Low – 2.56 A Medium – 3.59 A High – 7.05 A
Size:	9.5"(W) X 5.5"(D) X 5.5"(H)	9.5"(W) X 5.5"(D) X 5.5"(H)	10.5"(W) X 4.2"(D) X 5.2"(H)	14.56"(W) X 7.3"(D) X 3.95"(H)	17.56"(W) X 5.9"(D) X 6.2"(H)	17.56"(W) X 5.9"(D) X 6.2"(H)
Construction:	ABS Plastic Body	ABS Plastic Body	Steel -18-gauge Black Powder Coat	Steel -18-gauge Black Powder Coat	Steel - 18-gauge Black Powder Coat	Steel - 18-gauge; Black Powder Coat
Mounting	180° Rotating & Locking Brackets	180° Rotating & Locking Brackets	Integrated Mounting Tabs	Integrated Mounting Tabs	Integrated Mounting Tabs	Integrated Mounting Tabs
Hose Barb:	3/4"	3/4"	3/4"	3/4"	3/4"	3/4"
Weight (Lb):	3.5	3.5	3.6	6.75	9.52	9.52
Warranty:	One year	One year	One year	One year	One year	One year

REQUIRED FOR SIDE BY SIDE INSTALLATION TO PREVENT ENGINE OVERHEATING

INSTALLATION KIT FEATURES

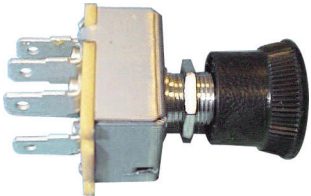
- Plumbs directly into 22mm, 3/4" or 1" radiator hoses
- Gives control of hot water flow
- Protects against engine overheating
- Maximizes heat OUTPUT



PLE-200-150 KIT CONTAINS

- Aqua-Hot DIVERTER MANIFOLD VALVE©
- BARBED FITTINGS: 1/2" NPT x 3/4"; 3/4" NPT x 1"; 3/4" NPT x 22mm
- BACKING PLATE
- DRILL BIT – #9
- HOLE SAW – 1.5" with pilot bit
- GROMMET – 1" bore x 1/4" groove
- HEATER HOSE – 10- feet x 3/4"
- CONSTANT TENSION CLAMPS –#290
- WORM DRIVE CLAMPS
- 20ga RED WIRE – 10-feet
- 20ga BLACK WIRE - 10-feet
- FUSE HOLDER – in-line blade type
- FUSE – 5 amp Spade type
- CONNECTORS – Butt-end 18-22 ga and Tap-splice 18-22 ga
- TEFLON TAPE roll

For detailed installation instructions, visit www.aquahot.com/library.aspx



THREE-SPEED FAN SWITCH ELE-100-001

*Sold separately, the Aqua-Hot three speed fan switch dependably controls the WR13000, WR20000 and WR30000 auxiliary heaters.